



MG McGrath

GREAT PEOPLE. AMAZING RESULTS.

MG WET-SET

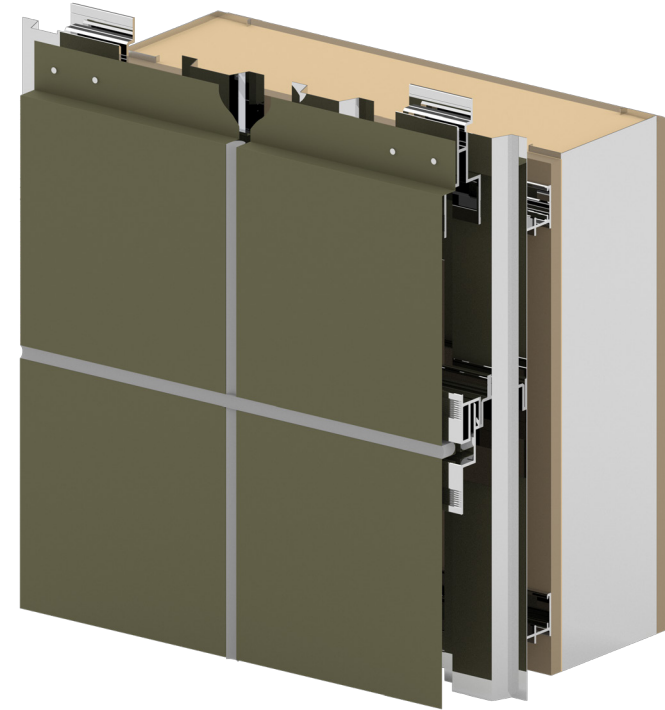
PLATE & COMPOSITE PANEL SYSTEM

DESCRIPTION

Our MG Wet-Set panel system offers customers the perfect combination of performance and design. Materials for this system can be radius, tapered, and welded to suit nearly any design function or appearance. Panels are fabricated with a rout and return flange available in various sizes based on the design intent. They are also available in a wide variety of colors and finishes and deliver on providing a smooth, flat, blemish-free finished product

FEATURES AND OPTIONS

- Includes fasteners and stiffeners if required
- Panel system to accommodate substructure tolerance of +0 to -1/8 inch
- Panels can be installed over almost any substrate
- Custom alloys available based on material choice
- Painted, anodized, and milled finish options available



MATERIALS & FINISHES

MATERIAL	THICKNESS	SIZES (TYPICAL)	FINISHES
Steel	3mm, 4mm, & 6mm	Width: 50" to 62" Length: 144"	MG steel custom patina finishes, or standard and custom colors
Stainless	3mm, 4mm, & 6mm	Width: 50" to 62" Length: 144"	Standard and custom colors available
Aluminum	3mm, 4mm, & 6mm	Width: 50" to 62" Length: 144"	Standard and custom colors available
Copper	3mm, 4mm, & 6mm	Width: 50" to 62" Length: 144"	MG copper custom patina finishes