



**MG McGrath**

GREAT PEOPLE. AMAZING RESULTS.

# MG PLATE

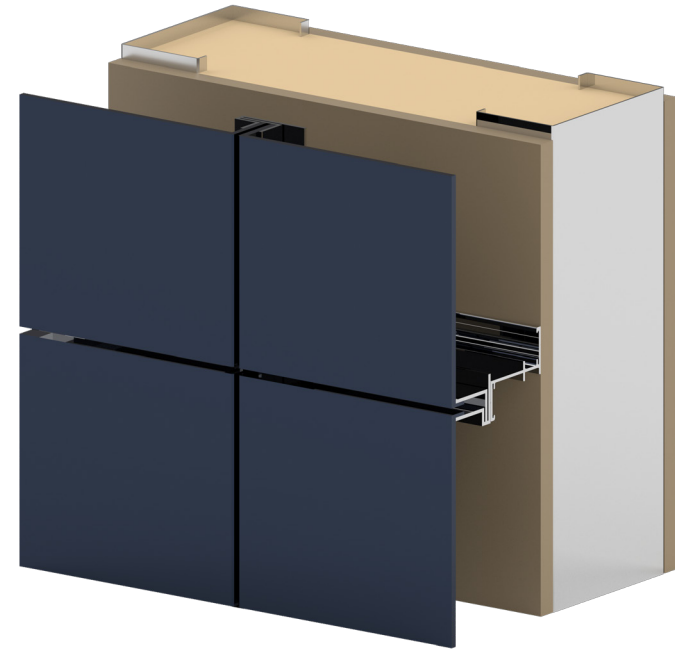
PLATE & COMPOSITE PANEL SYSTEM

## DESCRIPTION

The MG-Plate panel system offers meticulous accuracy and consistent design. Panels are fabricated with automated CNC Router technology to insure precise joinery and tolerance. Materials can be radius, straight, or tapered to achieve any desired appearance along with rout and return flange options available in various sizes. MG-Plate panels can be installed over a wide variety of various substrates to meet the needs of your project

## FEATURES AND OPTIONS

- Includes panel clips and stiffeners if required
- Panel system to accommodate substructure tolerance of +0 to -1/8 inch
- Panels can be installed over almost any substrate
- Custom alloys available based on material choice



## MATERIALS & FINISHES

MATERIAL	THICKNESS	SIZES (TYPICAL)	FINISHES
Steel	.080" - .125"	Width: 48" or 60" Length: 120" or 144"	MG steel custom patina finishes, or standard and custom colors
Stainless	.080" - .125"	Width: 48" or 60" Length: 120" or 144"	Standard and custom colors available
Aluminum	.080" - .125"	Width: 48" or 60" Length: 120" or 144"	Standard and custom colors available
Copper	.080" - .125"	Width: 48" or 60" Length: 120" or 144"	MG copper custom patina finishes
Zinc	.080" - .125"	Width: 48" or 60" Length: 120" or 144"	MG zinc custom patina finishes, or standard and custom colors