



MG McGrath

GREAT PEOPLE. AMAZING RESULTS.

MG H-SEAM

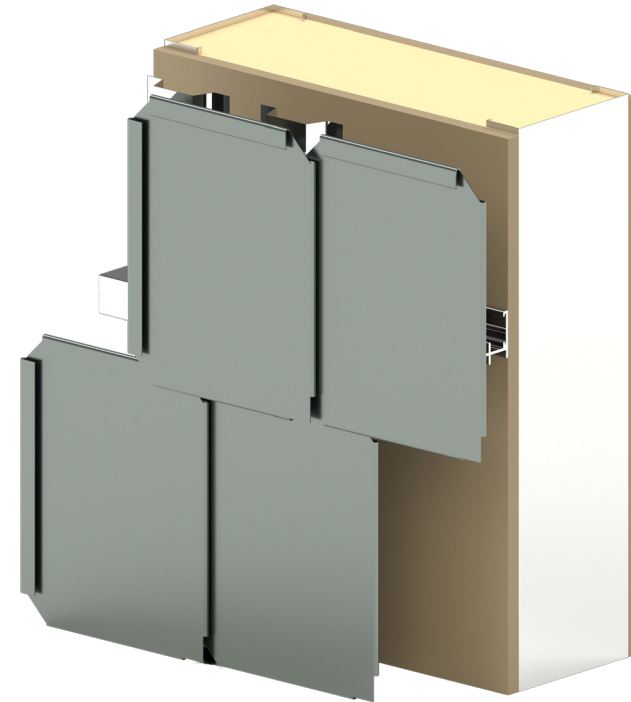
FLAT LOCK PANEL SYSTEM

DESCRIPTION

The MG H-Seam panel system has been created with complexity in mind and can be fabricated to suit complicated structures or field conditions. This system can be installed on walls or roofs and are excellent for soldered roofing or rain screen applications. The panels have an interlocking hook seam connection and are mechanically fastened with concealed clips and fasteners and then installed in a sequential pattern, hooked on all four sides to form a watertight system

FEATURES AND OPTIONS

- Includes interlocking slip connection clips and stiffeners if required
- Panel system to accommodate substructure tolerance of +0 to -1/8 inch
- Panels can be installed over almost any substrate
- Custom alloys available based on material choice
- Milled, brushed, mirrored, colored, and textured finish options available



MATERIALS & FINISHES

MATERIAL	THICKNESS	SIZES (TYPICAL)	FINISHES
Stainless	24 – 16 gauge	Seam Spacing: 6" or 24" Length: 12" to 118"	Standard and custom colors available
Aluminum	.032" to .125"	Seam Spacing: 6" or 24" Length: 12" to 118"	Standard and custom colors available
Copper	16oz & 20oz	Seam Spacing: 6" or 24" Length: 12" to 118"	MG copper custom patina finishes
Zinc	.7mm to 1.5mm	Seam Spacing: 6" or 24" Length: 12" to 118"	MG zinc custom patina finishes, or standard and custom colors
Titanium	26 gauge	Seam Spacing: 6" or 24" Length: 12" to 118"	Standard and custom colors available