



**MG McGrath**

GREAT PEOPLE. AMAZING RESULTS.

# MG UNITIZED GLASS+ CURTAIN WALL

## UNITIZED / MODULAR SYSTEM

### DESCRIPTION

The MG Unitized Glass Curtain Wall system combines the cost control of standard glass curtain wall with the schedule advantages and precision of unitization. Our system is adaptable enough to meet modern design concepts, and responsive enough to be tailor-made to meet your projects performance and aesthetic requirements. Engineered with performance built-in, our system meets the peak standards for air infiltration, water infiltration, and structural integrity. Our pre-glazed unitized curtain wall is factory assembled for elevated quality control and safety with the added benefit of year-round building erection.

### TESTING DATA

Our MGU-8 System was Tested and Passed the Following North American Performance Testing Standards:

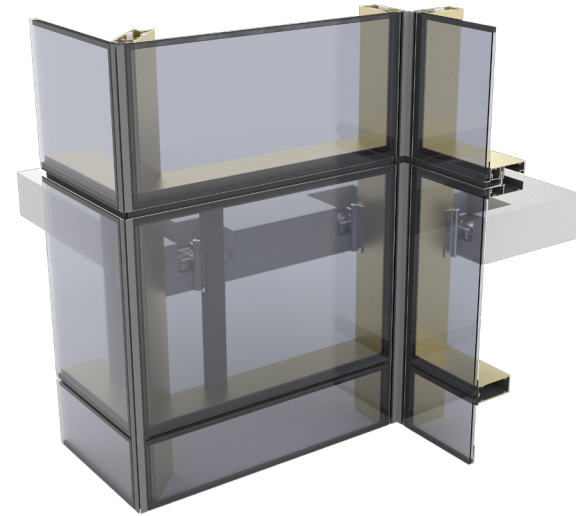
Performance Tests:

ASTM E283 – Air Infiltration  
ASTM E331 – Static Water  
ASTM E501.1 – Dynamic Water  
ASTM E330 – Structural (Wind Load)  
AAMA 501.4 – Seismic  
AAMA 501.7 – Inter-Story Vertical Displacement

Simulated Tests:

NFRC 100 – Thermal Transmittance  
NFRC 200 – Overall Solar Heat Gain  
NFRC 500 – Condensation Resistance  
AAMA 501.5 – Thermal Cycling (Largely Dependent on Glass)

\*Testing data and performance is dependent on the glass used and customization changes to this baseline system\*



### FEATURES

- Best for mid-rise applications (new construction or renovation)
- Two system types:
  - 4-sided SSG system depth (for an all-glass exterior look)
  - Captured
- 8-1/4" 4-side SSG system depth or 9-1/4" captured system depth and 3" sight line
- Shop glazed infill options:
  - 1-5/16" laminated vision
  - 1-5/16" laminated spandrel
- 90° inside and outside corners \*system can be customized to accommodate unique corners\*
- Top of slab fully adjustable anchoring ±1" in & out, up & down and left & right
- Fully tested to North American Standards \*tests listed below\*
- Capabilities include exterior re-glazing
- Polyamide thermal break
- Standard stack joint size requirements accommodate +/- 3/4" of total movement for building expansion and contraction
- Screw spline shop assembly

### OPTIONS AND CUSTOMIZATION

- Can accommodate a variety of glass thicknesses
- Can accommodate rainscreen and other spandrel systems such as, but not limited to, metal panel, stone, terracotta, fiber cement, etc.
- Additional design options and sizes available for mullions, trim, brackets, and covers
- Anodized finishes available in multiple choices, as well as painted finishes in standard and custom colors
- Interior and exterior can be two different colors/finishes
- Available spandrel back panning with enhanced pressure equalized venting/weeping options
- Steel reinforcing available
- Sunshade add-on options available
- Can be fully installed from the inside for cost savings