

# Panels clad new art center

The 27,240-square-foot **Janet Wallace Fine Arts Center** at **Macalester College** in **St. Paul, Minn.**, features approximately 29,000 square feet of interior and exterior panels. The project includes 20,850 square feet of 0.040-inch Flush Seam Panels with reveals ranging from 2 to 8 inches in smooth Black anodized 5005 aluminum alloy from Firestone Metal Products, Anoka, Minn. The metal was fabricated and bent by MG McGrath, Maplewood, Minn. MG McGrath also fabricated 6,390 square feet of Chesapeake, Va.-based Mitsubishi Plastic Composites America Inc.'s 4-mm ALPOLIC wet joint metal composite material panels in smooth Black anodized, as well as louvers. On the interior,

MG McGrath installed perforated rib panels from Fabral, Lancaster, Pa., and expanded metal ceilings from AMICO, Birmingham, Ala., in addition to the ALPOLIC composite panels. Hiawatha Metalcraft Inc., Minneapolis, coated the panels.

The panels and louvers were installed on the building exterior at varying reveals to provide natural light into the building. Metal was used for this project because of its durability. The exterior panels and louvers provide natural light into the building, in addition to a weatherproof seal. HGA, Minneapolis, was the architect, and McGough Construction, St. Paul, was the general contractor.

**ALPOLIC by Mitsubishi Plastics Composites America Inc.**,  
www.alpolic-usa.com, Circle #60

**AMICO**,  
www.amico-online.com, Circle #61

**Fabral**,  
www.fabral.com, Circle #62

**Firestone Metal Products Inc.**,  
www.firestonemetal.com, Circle #63

**Hiawatha Metalcraft Inc.**,  
www.hiawathametalcraft.com, Circle #64



R & M STEEL COMPANY



**Aviation Building Systems**  
Since 1969



**T-Hangars • Individual Hangars • Shade Ports  
Corporate Hangars • Maintenance Hangars**

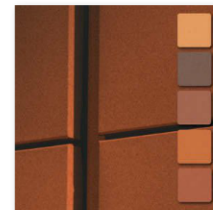
**TOLL FREE (U.S. only) 1-866-454-1800 • Outside U.S. (208) 454-1800**

**www.rmsteel.com**

**Worldwide sales and distribution**

Circle #29 on reader service card.

## ALLURA™ COATING SYSTEM



Allura is CENTRIA's newest premium PVDF coating system featuring a matte, low-gloss finish and a subtle,

aggregate texture. Available exclusively in five warm, earth-tone colors for CENTRIA's Formawall® Dimension Series®, Profile Series, Versawall® and Versapanel® product lines, Allura is highly durable and carries a 20-year finish warranty.

To learn more visit  
**CENTRIAperformance.com**  
or call 1.800.759.7474.

Circle #30 on reader service card.